

Greenwich Village's Grace Church School receives rooftop athletic center expansion

Murphy Burnham & Buttrick Architects designed the addition.

JANUARY 08, 2019 | DAVID MALONE, ASSOCIATE EDITOR



Courtesy Francis Dzikowski

Without any additional room to expand outward, the Grace Church School in Greenwich Village decided to expand upward with a rooftop athletic center. The 14,000-sf expansion includes offices, classrooms, locker rooms, storage facilities, a fitness center, and a golf simulator room. The centerpiece of the expansion, however, is a large, multipurpose gymnasium.

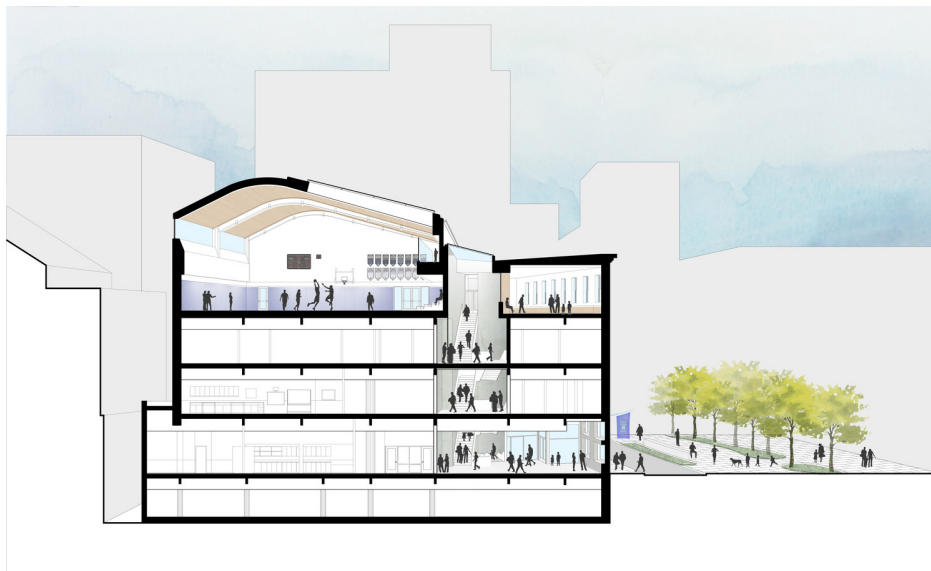
The gym can be divided into two spaces so, in addition to its use as a gymnasium, the space can be used as a performance and gathering space. It is capped with



Courtesy Francis Dzikowski

an arched steel roof equipped with skylights that use anti-glare Solera panels that draw light deep into the building's core.

Students in grades 7-12 get to the new addition via an extended stairwell. This stairwell leads them to a new student "commons" area that connects to the main gym space and also provides an area for informal gatherings. An acoustically isolating concrete slab set on floor jacks reduces vibration and sound transmission to the classrooms below.



Courtesy MBB architects